

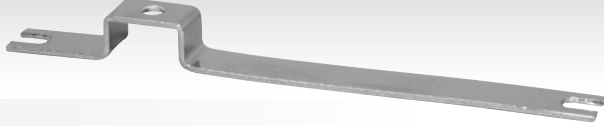
分電盤用銅帯

●材質:純銅C1100ニッケル3号メッキ

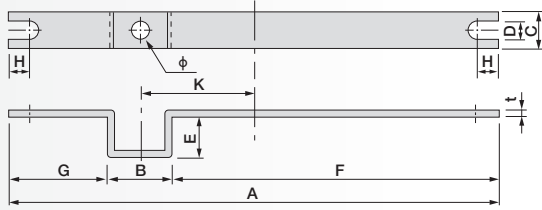
RTB形渡り銅帯寸法図

RTB-□形

1箱100本入り



▼外形寸法図

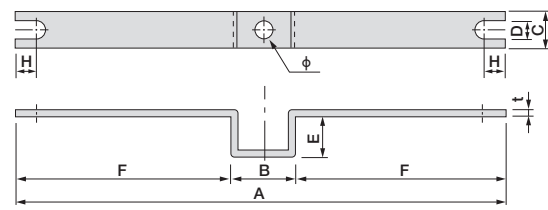


SB-□形

1箱100本入り

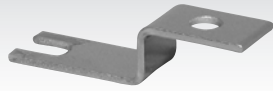


▼外形寸法図

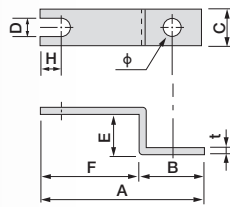


IPA-□形

1箱100本入り(ただし-3,-30、
-201,-301のみ200本入り)



▼外形寸法図



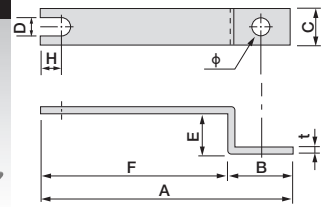
IPS-□形/IPR-□形

IPS-□形 1箱100本入り

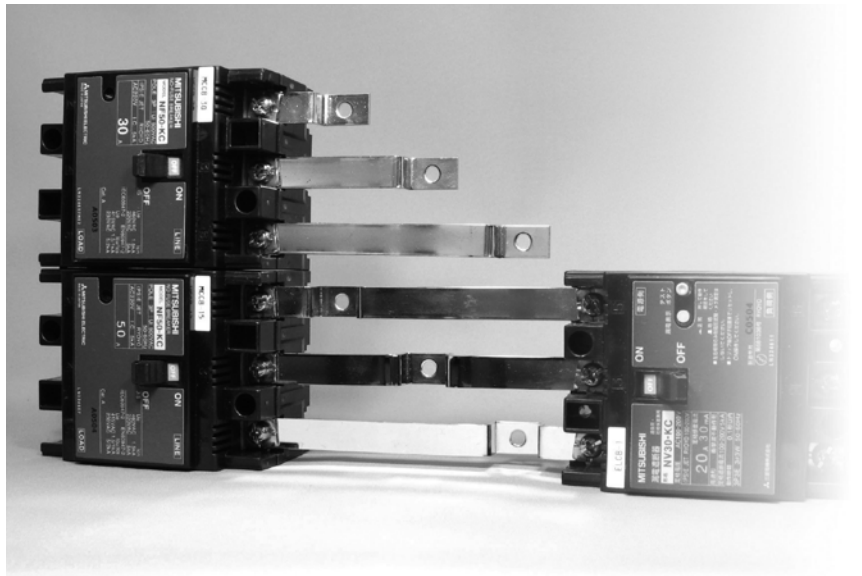
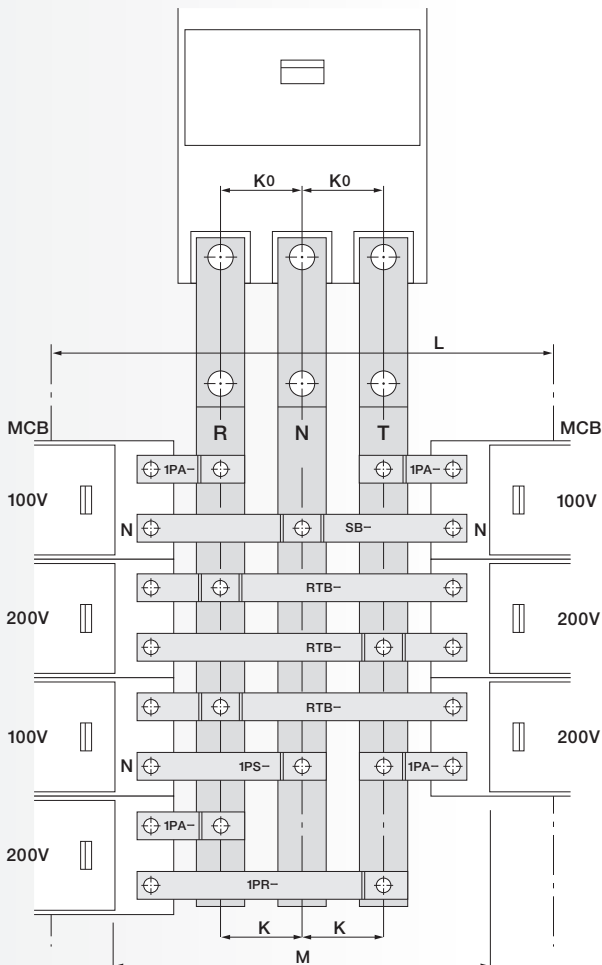
IPR-□形 1箱100本入り



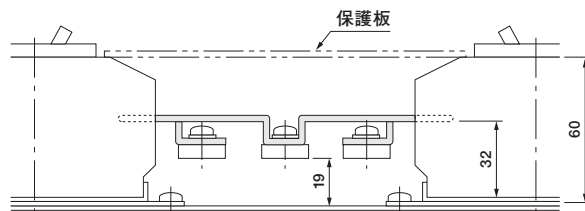
▼外形寸法図



RTB形渡り銅帯組立例



●材質:純銅C1100ニッケル3号メッキ



分電盤用銅帯寸法表

形式末尾のK(< >)表示は受注生産品です。また、その他特殊仕様の製作も承ります。

形式	一般仕様寸法				各部寸法											DB形と 共用可能銅帯型式	MCB ピッチ L		
	母線ピッチ K	MCBルーム [A]	定格電流 (A)	許容電流 (A)	M	A	B	t	C	断面積	D	E	F	G	H			φ	
R T B S B 1 P A -301	25	50	50	50	140	122								78.5	28.5			—	190
1 P S						43.5	15	1.5	12	18 [□]	5.5	10		53.5					
1 P R						68.5								28.5		6	5.5		
1 P R						93.5								53.5					
R T B S B 1 P A -3	30	50	50	50	140	122								81	21			DB-L190	190
1 P S						41	20	1.5	12	18 [□]	5.5	10		51					
1 P R						71								21		6	5.5		
1 P R						101								51					
R T B S B 1 P A -30	30	50	50	50	140	122								83.5	23.5			DB-L190	190
1 P S						122								81					
1 P R						38.5	15	1.5	12	18 [□]	5.5	10		21		6	5.5		
1 P R						68.5								51					
R T B S B 1 P A -30	30	50	50	50	140	122								83.5	23.5			DB-L190	190
1 P S						122								81					
1 P R						38.5	15	1.5	12	18 [□]	5.5	10		21		6	5.5		
1 P R						68.5								51					
R T B S B 1 P A -30	30	50	50	50	140	122								83.5	23.5			DB-L190	190
1 P S						122								81					
1 P R						38.5	15	1.5	12	18 [□]	5.5	10		21		6	5.5		
1 P R						68.5								51					
R T B S B 1 P A -5	25	50	70	70	150	132								82	32			—	200
1 P S						50	18	2	12	24 [□]	5.5	12		57					
1 P R						75								32		6	5.5		
1 P R						100								57					
R T B S B 1 P A -211	30	50	50	50	158	140								92	32			—	208
1 P S						48	16	1.5	12	18 [□]	5.5	10		62					
1 P R						78								32		6	5.5		
1 P R						108								62					
R T B S B 1 P A -2	35	50	50	50	158	140								92.5	22.5			DB-L208	208
1 P S						47.5	25	1.5	12	18 [□]	5.5	10		57.5					
1 P R						82.5								22.5		6	5.5		
1 P R						117.5								57.5					
R T B S B 1 P A -201	35	50	50	50	158	140								95	25			DB-L208	208
1 P S						45	20	1.5	12	18 [□]	5.5	10		60					
1 P R						80								25		6	5.5		
1 P R						115								60					
R T B S B 1 P A -21	35	100	90	100	158	140								92.5	22.5			DB-L208	208
1 P S						47.5	25	2	15	30 [□]	8.5	10		57.5					
1 P R						82.5								22.5		7	6.5		
1 P R						117.5								57.5					
R T B S B 1 P A -10	30	50	70	70	170	152								97	37			—	220
1 P S						54	18	2	12	24 [□]	5.5	12		67					
1 P R						85								36		6	5.5		
1 P R						115								67					
R T B S B 1 P A -111	30	50	40	50	180	162								103	43			—	230
1 P S						59	16	1.2	12	14.4 [□]	5.5	12		73					
1 P R						89								43		6	5.5		
1 P R						119								73					
R T B S B 1 P A -20	35	50	70	70	180	162								106	36			—	230
1 P S						56	20	2	12	24 [□]	5.5	12		71					
1 P R						91								36		6	5.5		
1 P R						126								71					
R T B S B 1 P A -22	35	100	125	125	180	162								104	34			—	230
1 P S						58	24	3	15	45 [□]	8.5	12		69					
1 P R						93								34		7	6.5		
1 P R						128								69					
R T B S B 1 P A -1	40	50	70	70	180	162								109	28			—	230
1 P S						53	25	2	12	24 [□]	5.5	12		68.5					
1 P R						93.5								28		6	5.5		
1 P R						134								68.5					
R T B S B 1 P A -11	40	100	90	100	180	162								109	28			—	230
1 P S						53	25	2	15	30 [□]	8.5	12		68.5					
1 P R						93.5								28		7	6.5		
1 P R						134								68.5					
R T B S B 1 P A -40	44	50	70	70	210	192								127	40			DB-L260	260
1 P S						65	25	2	12	24 [□]	5.5	12		84					
1 P R						109								40		6	5.5		
1 P R						153								84					
R T B S B 1 P A -41	44	100	125	125	210	192								125	37			—	260
1 P S						67	30	3	15	45 [□]	8.5	12		81					
1 P R						111								37		7	6.5		
1 P R						155								81					

定格電流はJISC8480:2016、許容電流はメーカー試験結果によります。